



FOUNDRY QUIZATHON

By: Mr. Sivakumar Subbarayan
Plant Head | Pitti Castings Pvt. Ltd.

Test your Basics on Pattern Making
Supported By | Shamlax Meta-Chem Pvt. Ltd.

Quiz Prizes Supported By



Last Date of Submission: 23rd August 2023

- 1) **Weight of the square riser against weight of sphere-shaped riser with same modulus is ?**
 - a. More
 - b. Less
 - c. Same
 - d. None of the above

- 2) **Contraction allowance for White Cast iron is ?**
 - a. 1.0
 - b. 1.1
 - c. 2.1
 - d. 0.8

- 3) **In investment casting process the material of pattern is ?**
 - a. Cast iron
 - b. Copper
 - c. Aluminium
 - d. None of the above

- 4) **Modulus of an end plate is ?**
 - a. 1/2 of thickness
 - b. 1/3 of thickness
 - c. 7/8 of thickness
 - d. None of the above

- 5) **The master pattern is made of steel, the shop floor pattern is made of Aluminium and the casting is made of Brass. The allowance to be given for master pattern is shrinkage allowance of ?**
 - a. Steel and Aluminium
 - b. Aluminium and Brass
 - c. Brass and Steel
 - d. None of the above

How to Participate in the Foundry Quiz:

Option 1) Scan the QR Code to Start the Quiz and fill out the basic details, click next, answer the questions and then click on submit

Option 2) Send answers to the following questions on western.region@indianfoundry.org with basic details (Name & IIF Membership No.)

Winner will be based on first one to answer the maximum correct answers



Click Here



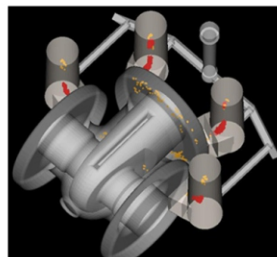
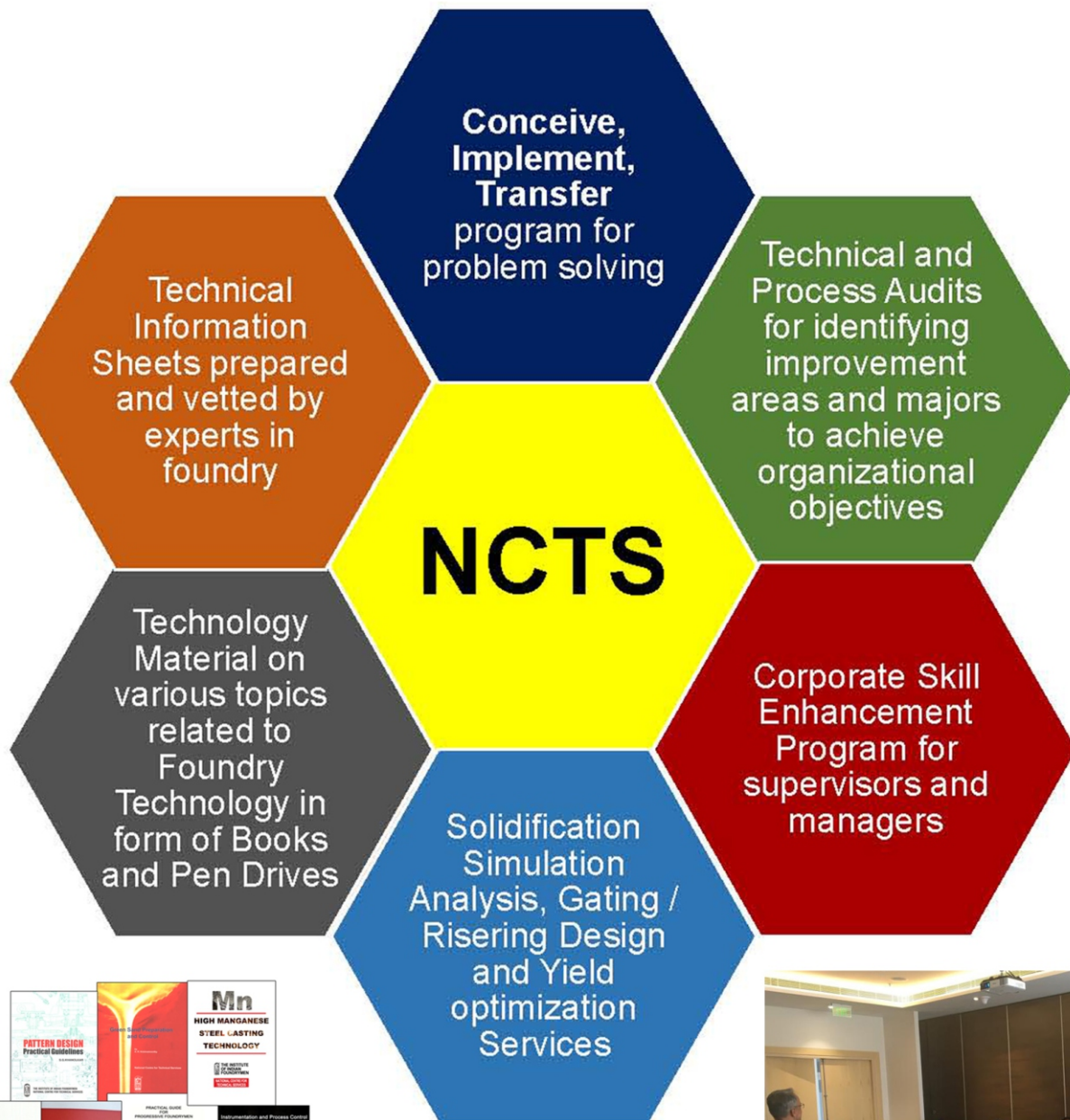
Winner will be awarded with NCTS voucher of Rs. 750/- which can be availed against services of NCTS. Also, picture and details of the winner will be posted in the next issue of the magazine with the correct answers.

Please note, winner will be based on first one to answer the maximum correct answers

Quiz Prizes Supported By



NATIONAL CENTRE for TECHNICAL SERVICES



Mob. 9403871063, T. +9120 - 2542 2902.E. ncts@indianfoundry.org, www.iifncts.org